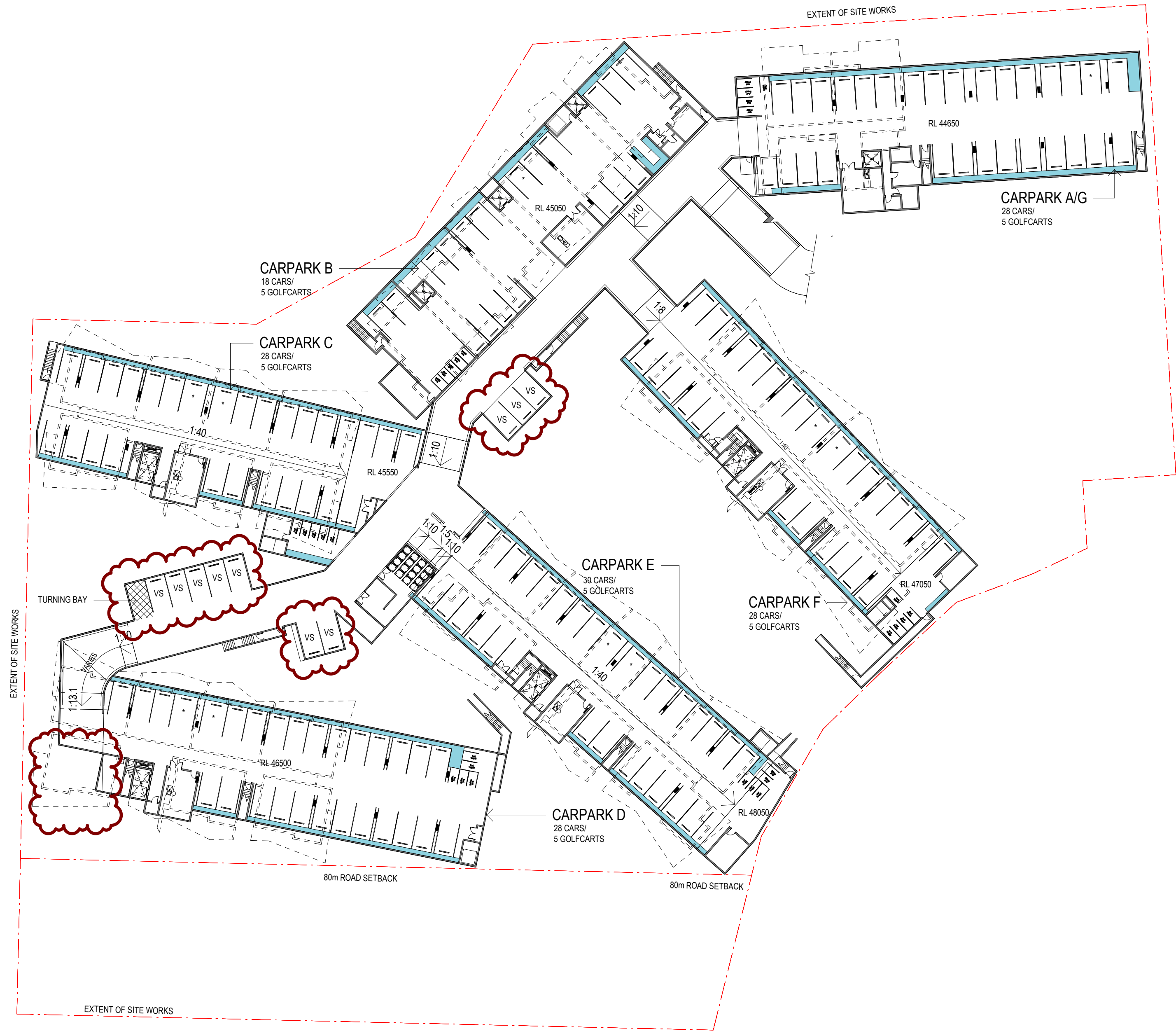


AMENDMENTS

ISSUE	DESCRIPTION	APPROVED	DATE
1	REVISED BASEMENT PARKING		09/09/19



NOTE:
ELEVATIONS, SECTIONS AND 3D MODEL STUDIES DO NOT SHOW THE INTENDED FINAL BUILDING COLOUR. IT SHOWS SHADOW EFFECT TO GIVE DEPTH TO THE DRAWING ONLY.

0 10 20

Scale 1:500 @ A1

50mm on original

THIS DRAWING ISSUE HAS BEEN REVIEWED FOR

BASEMENT - SITE PLAN

APPROVED BY: TW CHECKED BY: DK

CLIENT
SUNSHINE PROPERTY
INVESTMENT GROUP

DRAWING
SITE PLAN BASEMENT

DATE 19/09/09 SCALE @ A1 1 : 500 DRAWN Author

PROJECT No. 2016070 DRAWING No. SK19-09-09 ISSUE 1

PROJECT
PENRITH GOLF CLUB SENIORS LIVING

Lot 1, Pier 8-9, 23 Hickson Road
Walsh Bay New South Wales 2000 Australia
T 61 2 9290 2722 F 61 2 9290 1150
E sydney@jacksonteece.com
Jackson Teece Chesterman Willis Pty Ltd
Trading as Jackson Teece
ABN 15 083 837 290
Nominated Architect Ian Brodie (4275)

JACKSON TEECE